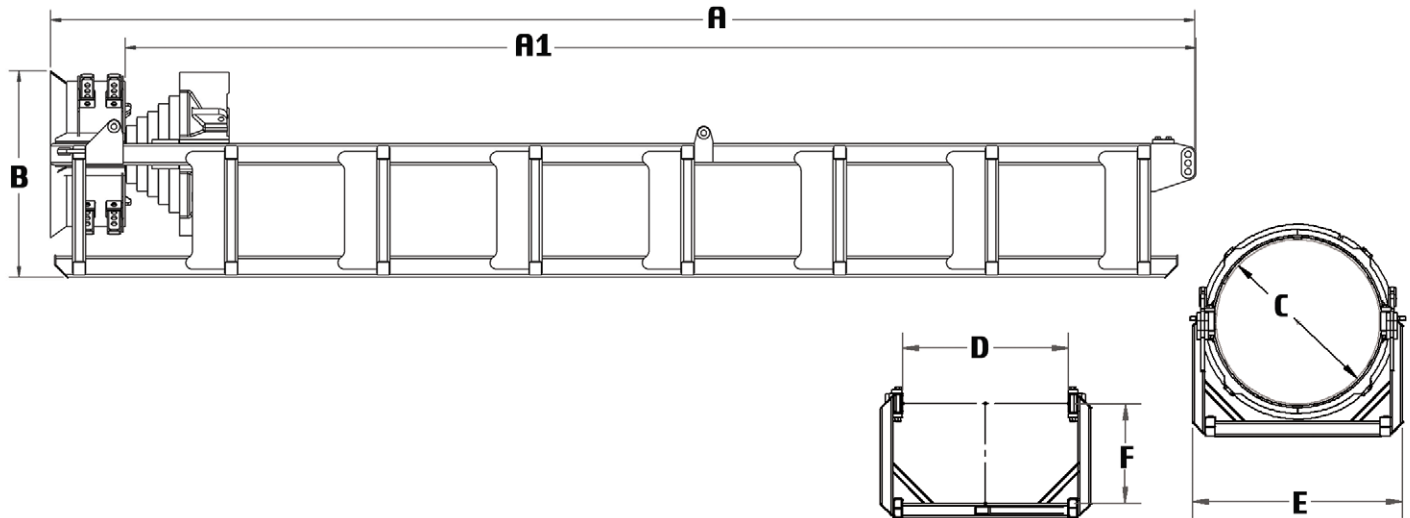




OFFSHORE LEAD A104 SERIES



Standard Units

Lead Type and P#	A	A1	B	C=pile Ø	D	E	F	Lead Weight lbs	Helmet	Weight Total approx. lbs for P# assembly
A104-36 (P-700)	27.2 ft	25 ft	62.5 in	36 in	42.5in x 8	58.5 in	29 in	7,000	P-514	15,352 lbs.
A104-42 (P-701)	36 ft	33.5 ft	72 in	42 in	48.5in x 8	66.5 in	37 in	7,500	P-515	24,551 lbs
A104-48 (P-702)	36 ft	33.5 ft	75 in	48 in	54.5in x 8	72.5 in	39 in	11,908	P-515	29,984 lbs
A104-66 (P-704)	40 ft	38.5 ft	85 in	66 in	66.5in x 8	84.5 in	40 in	13,880	P-516	45,757 lbs

Metric Units

Lead Type and P#	A	A1	B	C=pile Ø	D x 200mm	E	F	Lead Weight Kg	Helmet	Weight Total approx. Kg for P# assembly
A104-36 (P-700)	8.3m	7.62 m	158.8cm	91.4cm	108cm	148.6cm	73.7cm	3,175	P-514	6,964 kg
A104-42 (P-701)	11m	10.21m	182.9cm	106.7cm	123.2cm	169cm	94cm	3,402	P-515	11,136 kg
A104-48 (P-702)	11m	10.21m	190.5cm	121.9cm	138.4cm	184.2cm	99.1cm	5,198	P-515	13,601 kg
A104-66 (P-704)	12.2m	11.7m	216cm	167.6cm	169cm	214.6 cm	101.6cm	6,296	P-516	20,755 kg