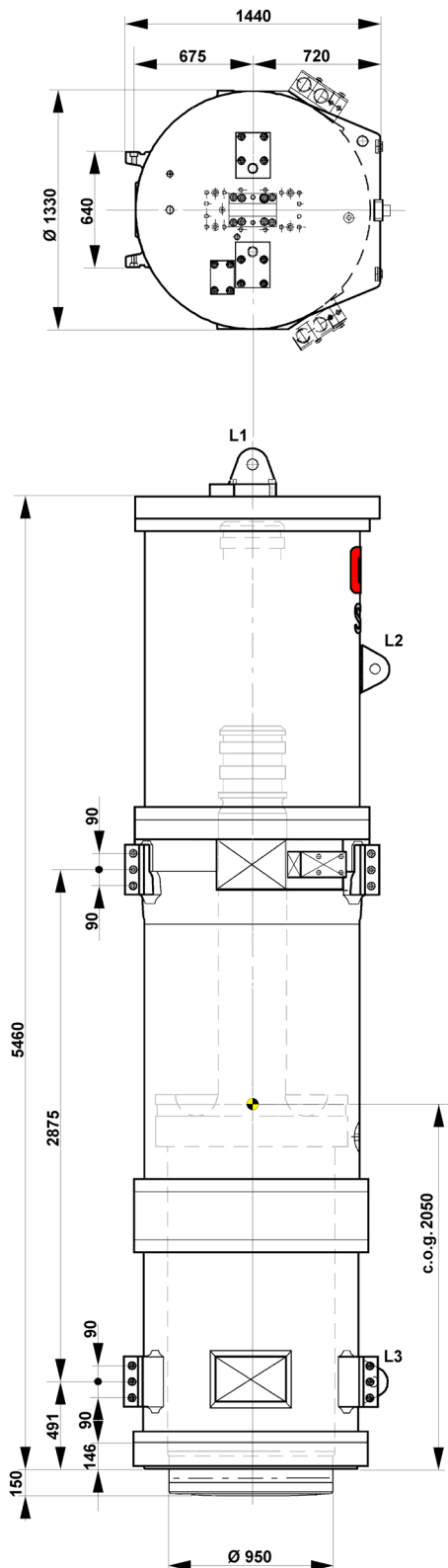


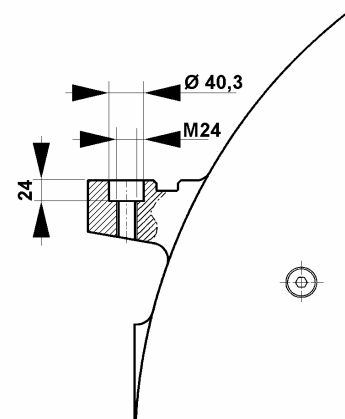


APPLICATION: Steel and concrete piles

Code no. 85.80.00.00



Main dimensions



SC-200 Fig. 19.bmp

Operating data

Max. net energy/blow	200	kNm
Min. net energy/blow	10	kNm
Blow rate (max energy)	38	Blows/min

Weights

Ram	13,6	tons
Hammer (incl. ram, in air)	26,5	tons
Hammer (incl. ram, in salt water)	19,8	tons
(Only if fully submerged!)		

Hydraulic data

Operating pressure	240-280	bar
Max. pressure	350	bar
Max. oil flow	650	l / min

Gas filling pressure

Supply accumulator (Nitrogen)	140-170	bar
Return accumulator (Nitrogen)	4 - 5	bar
Cap (Nitrogen or air)	10-12	bar

Safety setting

Cap	40	bar
-----	----	-----

Hose connections

Oil supply 2" (P)	M68x2	male
Oil return 2" (R)	M68x2	male
Nitrogen to cap (CA)	R 1/4"	male

Working Load Limit (WLL) and hole diameter

L1	85 tons	Ø84 mm
L2 and L3	25 tons	Ø55 mm