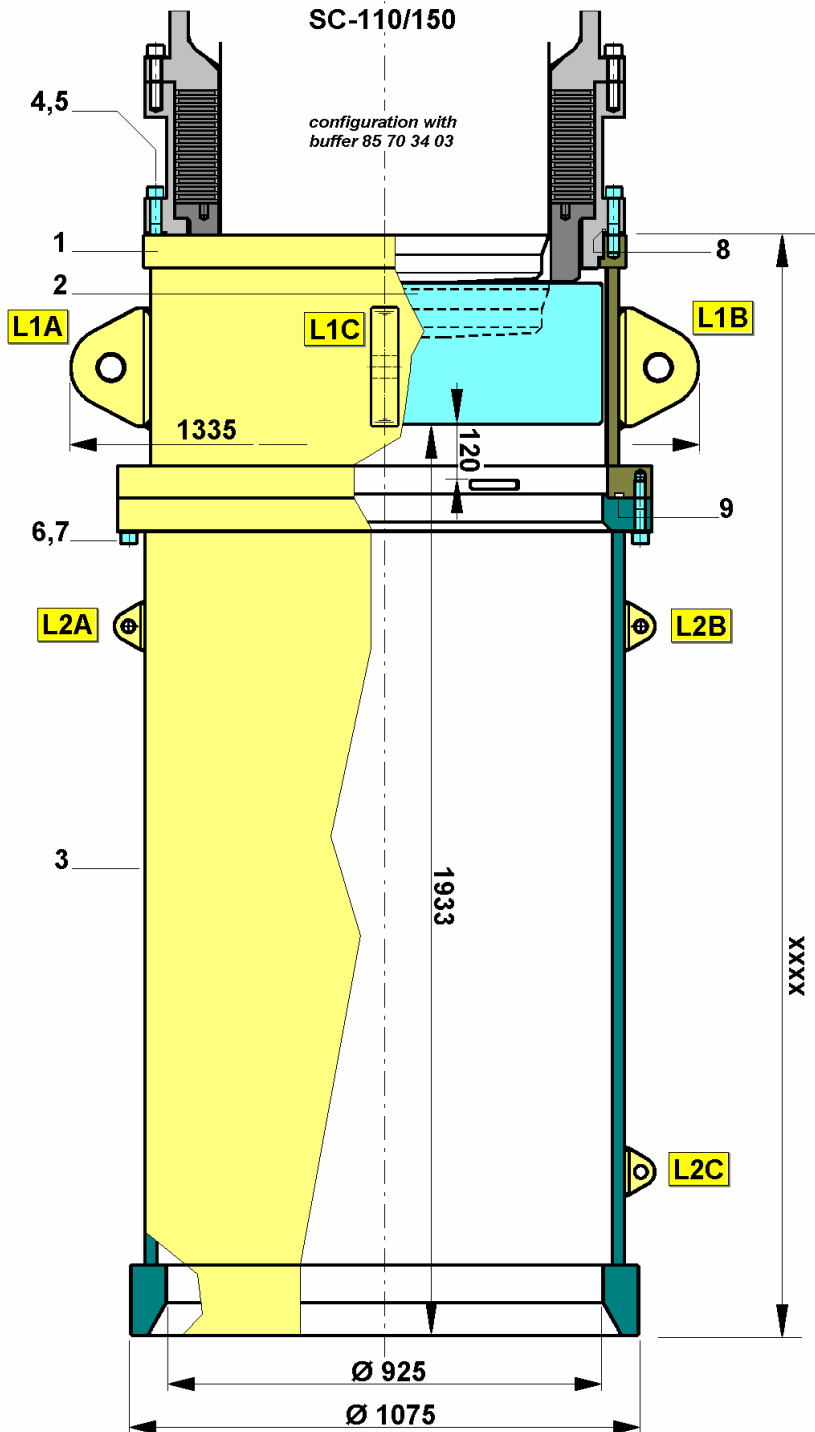




APPLICATION: Hydrohammer®, type SC-110/150

Code no. 86 20 07 00



86 20 07 00 SLEEVE SC-110-150 W BUFFER.bmp

Weights

- Anvil housing	522 kg
- Anvil	1625 kg
- Pile guiding	1380 kg
Total:	3527 kg

Measures

Overall length	xxxx mm
Overall width	1335 mm
Stick-up length	1993 mm

Lifting eyes

	WLL	hole diam.	thick ness
- L1A/B/C	25 tons	Ø 54 mm	45 mm
- L2A/B/C	6,5 tons	Ø 27 mm	30 mm

Pos.Q'ty

Description

IHC Code no.

1	1	Anvil housing.....	86 20 07 01
2	1	Anvil	86 11 00 22
3	1	Pile guiding	86 20 07 02

Connecting hammer to anvil housing

4	40	HV-ring.....	85 10 90 10
		id=Ø26	
5	40	Socket head screw	85 15 90 01
		M24x110 (12.9)	
8	1	O-ring.....	85 70 90 23
		915x5	

Connecting anvil housing to pile guiding

6	24	HV-ring.....	85 10 90 10
		id= Ø26	
7	24	Socket head screw	85 15 90 01
		M24x110 (12.9)	
9	1	O-ring.....	85 30 90 78
		980x7 (L=3075mm)	