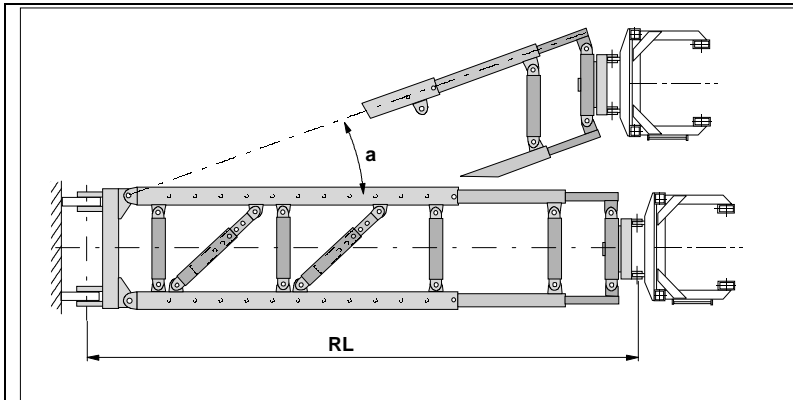




PILECO, INC.

P.O. Box 16099, Houston, TX, 77222
 phone: 713- 691 3000 toll free 1-800-231-0421
 fax : 713-691 0089 e-mail : pileco@pileco.com

Spotters

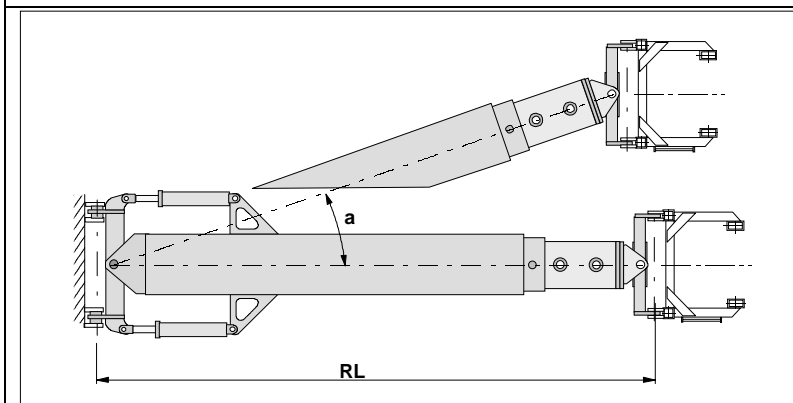


Model 1000

Useable with 3 axis boom point connector or swinging lead

retracted length RL	17.5'
stroke (20 steps ea. 1')	20.0'
side swing a to each side	20.0°
weight approx.. (lbs)	1,500

Simple Mechanical spotters are manufactured for use with small and medium size leads and hammers when the job does not require many different lead positions. The parallelogram principle allows the side swing, telescopic pipes can be locked in required position

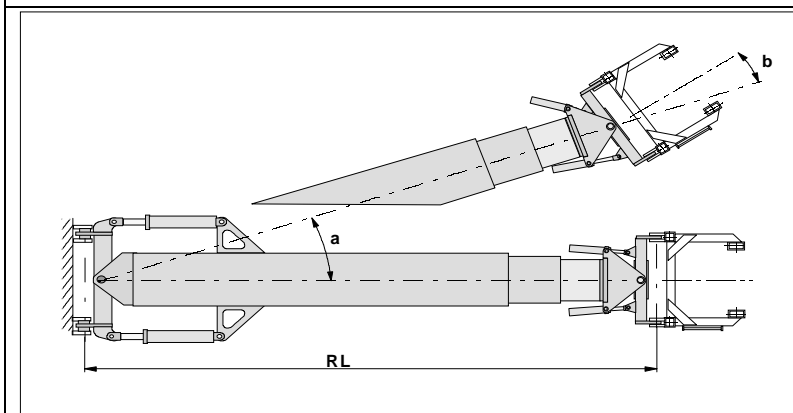


Model 1200-1

Useable with 2 axis boom point connector

retracted length RL	14.0'
Hydraulic stroke	6' 8"
Manual (6 steps ea. 1')	6'
side swing a to each side	19.0°
weight approx.. (lbs)	4,500

The spotter for-aft batter movement is a combination of hydraulic and manual. adjusting. This gives a wide working range with a smaller range for quick changes



Model 2000

Useable with 3 axis boom point connector or swinging lead

retracted length RL	17'
Hydraulic stroke	20'
side swing a to each side	30°
Top side swing b to ea. side	30°
weight approx.. (lbs)	10,000

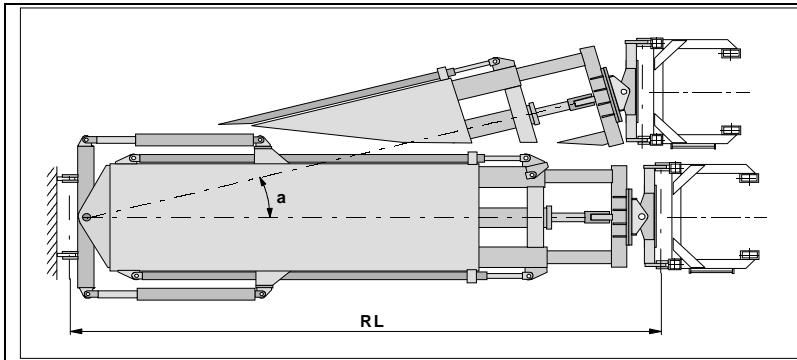
The heavy duty hydraulic spotter with a large side swing gives the possibility for a wide working range concerning for-aft batter and side way lead inclination. The vertical axis to the lead connector is hydraulically adjustable and allows using a 3 axis boom point connector or a swinging lead system



PILECO, INC.

P.O. Box 16099, Houston, TX, 77222
 phone: 713- 691 3000 toll free 1-800-231-0421
 fax : 713-691 0089 e-mail : pileco@pileco.com

Spotters

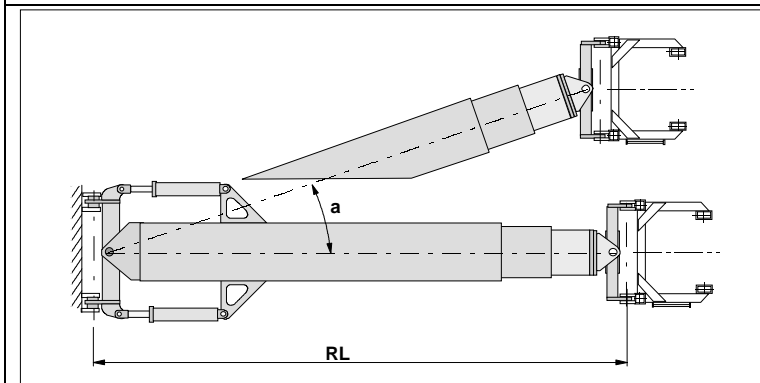


Model 2000-1

Useable with 2 axis boom point connector

retracted length RL	16.0'
Hydraulic stroke	20'
side swing a to each side	15.0°
weight approx.. (lbs)	7,000

This light-weight hydraulic spotter provides a full hydraulic for-aft batter movement and side swing



Model 2000-2

Useable with 2 axis boom point connector

retracted length RL	21' 7"
Hydraulic stroke	24'
side swing a to each side	30°
weight approx.. (lbs)	14,000

The heavy duty hydraulic spotter with a large side swing range gives the possibility for a wide working range concerning for-aft batter and side way lead inclination.

All spotters include welding pad eyes for the lead and crane connection also the pins.
 The lead connection with a sled for vertical travel is possible.
 Hydraulic spotters include also spool hydraulic valve and the necessary hoses hoses for connection.
 The hydraulic requirements are in a range between 10...20 gpm
 @ a max. hydraulic pressure of 2500 psi , see Pileco Hydraulic powerpack 40 HP

Note: Pileco, Inc. claims no expertise in crane boom design. The suitability of any crane boom to handle the imposed side and /or torsional loads resulting from batter piling operation should be verified by the crane manufacturer. Pileco can provide necessary data